

# IBS60P

## KEY FEATURES



years  
**Product  
Warranty**



years  
**Performance  
Warranty**



Cell efficiency  
up to **19.0 %**



Module efficiency  
up to **17.0 %**



Heavy snow load  
up to **5,400 Pa**



Wind load  
up to **2,400 Pa**



**PID Free**



## ELECTRICAL PARAMETERS

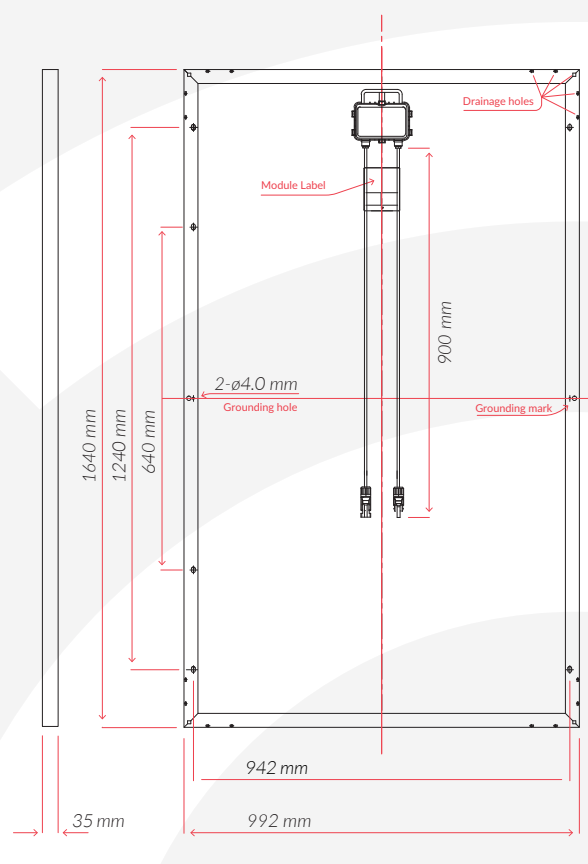
Model	IBS60P				
Maximum Power (Pmax/W)	<b>265</b>	<b>270</b>	<b>275</b>	<b>280</b>	<b>285</b>
Operating Voltage (Vmpp/V)	30.9	31.1	31.3	31.5	31.7
Operating Current (Impp/A)	8.58	8.69	8.79	8.89	9.00
Open-Circuit Voltage (Voc/V)	38.3	38.4	38.5	38.6	38.7
Short-Circuit Current (Isc/A)	8.98	9.09	9.20	9.31	9.42
Module Efficiency $\eta_m$ (%)	16.29	16.60	16.90	17.21	17.52
Power Tolerance	0+5 Wp				
NOCT	45±2°C				

Values at Standard Test Conditions STC (AM 1.5, Irradiance 1000 W/m<sup>2</sup>, Cell Temperature 25°C)

## SPECIFICATIONS

Cell Type	Poly Crystalline
Cells size	156x156 mm
Number of cells	60
Weight	18.5 kg
Front side glass	3,2 mm hardened solar tempered glass
Dimensions	1640x992x35 mm
Cable length	900 mm
Cable cross section size	4 mm <sup>2</sup>
Number of bypass diodes	3
Connectors	MC4 compatible
Frame	Anodized Aluminium Alloy
Junction Box	IP67

## ENGINEERING DRAWINGS



## WORKING CONDITIONS

Maximum System Voltage	DC 1,000 V (IEC)
Operating temperature	-40°C / +85° C
Maximum reverse current	15 A
IP protection level	IP65
Safety class	II

## TEMPERATURE COEFFICIENTS

Power temperature coefficient (Pmax)	-0,41 %/°C
Voltage temperature coefficient (Voc)	-0,31 %/°C
Current temperature coefficient (Isc)	+0,05 %/°C



## PACKAGING INFORMATION (I)

Pallet dimension	1,700/1,130/1,110 mm
Pallet weight	600 kg
Modules/pallet	30

## PACKAGING INFORMATION (II)

Container	20 GP	40 GP	40 HQ
Pallets per container	12	28	28
Pieces per container	360	840	924

## PARTNERS